

PUBLIC NOTICE

**CHARLESTON DISTRICT, CORPS OF ENGINEERS
69A Hagood Avenue
Charleston, South Carolina 29403-5107**

REGULATORY DIVISION

Refer to: P/N SAC-2017-00415

September 10, 2018

Pursuant to Section 10 of the Rivers and Harbors Act (33 U.S.C. 403) and Sections 401 and 404 of the Clean Water Act (33 U.S.C. 1341), the proposed Goose Pond Mitigation Bank Prospectus has been submitted to the Department of the Army (Corps) and the South Carolina Interagency Review Team (IRT) by

**PALUSTRINE GROUP, LLC.
ATTENTION: MR. CHRIS CARTER
P.O. BOX 71795
NORTH CHARLESTON, SC 29415**

for a proposal to establish and operate a wetland and stream mitigation bank that is adjacent to

CONGAREE RIVER

at a location approximately 0.5 miles North of Vaughanville, SC. The property is located along Popular Spring Road, in Richland County, South Carolina (Latitude: N 33.88590°, Longitude: W - 80.97979°), Bush, Chappells, Cross Hill, and Dyson U.S. Geological Service Quadrangle sheets.

In order to give all interested parties an opportunity to express their views

NOTICE

is hereby given that written statements regarding the proposed work will be received by the Corps until

30 days from the Date of this Notice,

from those interested in the activity and whose interests may be affected by the proposed work.

The proposed project consists of establishing a freshwater wetland and stream mitigation bank in the Congaree watershed (8-digit Hydrologic Unit Code 03050110) located in the Level III Southeastern Plains Ecoregion. The proposed 1,185-acre mitigation site includes approximately 20,076 linear feet of nontidal stream and approximately 676 acres of freshwater wetlands.

The proposal is to preserve 11,163 linear feet of stream; restore 9,940 linear feet of stream by restoring appropriate and stable stream pattern, profile, and dimension and rerouting a ditched channel back into its relic channel; Enhance 437.7 acres of bottomland hardwood by restoring natural hydrology through filling ditches or utilizing ditch plugs and by planting native bottomland hardwood species; and preserve 238.8 acres of bottomland hardwood wetlands. Once the mitigation work is complete, the bank sponsor proposes to monitor the mitigation site to ensure that the restoration areas are performing as expected and meeting the necessary performance standards. The bank sponsor, using a conservation easement, will protect the mitigation bank site.

NOTE: This public notice and associated plans are available on the Corps' website at:
<http://www.sac.usace.army.mil/Missions/Regulatory/PublicNotices>.

Also, according to the Prospectus, the proposed mitigation bank will provide in-kind compensatory mitigation for authorized impacts to aquatic resources located within the Upper Coastal Plain ecoregion as shown on the attached Service Area Map. The work required to complete the proposed activities on the mitigation site may be authorized under Nationwide Permit #27 after reviews by the Corps, the South Carolina Department of Health and Environmental Control, and the Interagency Review Team.

The District Engineer has concluded that the discharges associated with this project, both direct and indirect, should be reviewed by the South Carolina Department of Health and Environmental Control in accordance with provisions of Section 401 of the Clean Water Act. As such, this notice constitutes a request, on behalf of the applicant, for certification that this project will comply with applicable effluent limitations and water quality standards (Section 401 of the Clean Water Act). The applicant is hereby advised that supplemental information may be required by the State to facilitate the review.

This notice initiates the Essential Fish Habitat (EFH) consultation requirements of the Magnuson-Stevens Fishery Conservation and Management Act. Implementation of the proposed project will not impact estuarine substrates and emergent wetlands utilized by various life stages of species comprising the shrimp and snapper-grouper management complexes. The District Engineer's initial determination is that the proposed mitigation bank actions would not have a substantial adverse impact on EFH or fisheries managed by the South Atlantic Fishery Management Council and the National Marine Fisheries Service (NMFS). Our final determination relative to project impacts is subject to review by and coordination with the NMFS.

Pursuant to the Section 7 of the Endangered Species Act of 1973 (as amended), the Corps has reviewed the project area, examined all information provided by the applicant, and the District Engineer has determined, based on the most recently available information that the project will have no effect on any Federally endangered, threatened, or proposed species and will not result in the destruction or adverse modification of designated or proposed critical habitat. This public notice serves as a request to the U.S. Fish and Wildlife Service and the National Marine Fisheries Service for any additional information they may have on whether any listed or proposed endangered or threatened species or designated or proposed critical habitat may be present in the area which would be affected by the activity.

Pursuant to Section 106 of the National Historic Preservation Act (NHPA), this public notice also constitutes a request to Indian Tribes to notify the District Engineer of any historic properties of religious and cultural significance to them that may be affected by the proposed undertaking.

In accordance with Section 106 of the NHPA, the District Engineer has consulted South Carolina ArchSite (GIS), for the presence or absence of historic properties (as defined in 36 C.F.R. 800.16)(1)(1)), and has initially determined that no historic properties are present; therefore, there will be no effect on historic properties. To ensure that other historic properties that the District Engineer is not aware of are not overlooked, this public notice also serves as a request to the State Historic Preservation Office and any other interested parties to provide any information they may have with regard to historic properties. This public notice serves as a request for concurrence within 30 days from the SHPO (and/or Tribal Historic Preservation Officer).

The District Engineer's final eligibility and effect determination will be based upon coordination with the SHPO and/or THPO, as appropriate and required and with full consideration given to the proposed undertaking's potential direct and indirect effects on historic properties within the Corps-identified permit area.

Any person may request, in writing, within the comment period specified in this notice, that a public hearing be held to consider this application. Requests for a public hearing shall state, with particularity, the reasons for holding a public hearing.

The decision whether to approve or deny the proposed mitigation bank will be based on an evaluation of the probable impact including cumulative impacts of the activity. All factors that may be relevant to the project will be considered, including the cumulative effects thereof; among those are conservation, economics, aesthetics, general environmental concerns, wetlands, historic properties, fish and wildlife values, flood hazards, flood plain values, land use, navigation, shoreline erosion and accretion, recreation, water supply and conservation, water quality, energy needs, safety, food and fiber production and, in general, the needs and welfare of the people.

The Corps of Engineers is soliciting comments from the public; Federal, state, and local agencies and officials; Indian Tribes; and other interested parties in order to consider and evaluate the impacts of this activity. Any comments received will be considered by the Corps of Engineers to determine whether to approve or deny the proposed mitigation bank. To make this decision, comments are used to assess impacts on endangered species, historic properties, water quality, general environmental effects, and the other public interest factors listed above. Comments are used in the preparation of an Environmental Assessment and/or an Environmental Impact Statement pursuant to the National Environmental Policy Act. Comments are also used to determine the need for a public hearing and to determine the overall public interest of the activity. **Please submit comments in writing, identifying the project of interest by public notice number, to the following address:**

**US Army Corps of Engineers
Attention: Regulatory Division
69A Hagood Avenue
Charleston, South Carolina 29403**

The Prospectus for the proposed mitigation bank is available for review by appointment between the hours of 9:00 am and 4:00 pm Monday through Friday at the address listed above. If there are any questions concerning the proposed mitigation bank or the information included in this public notice please contact David B. Wilson by e-mail at david.b.wilson@usace.army.mil or by telephone at 843-329-8044.

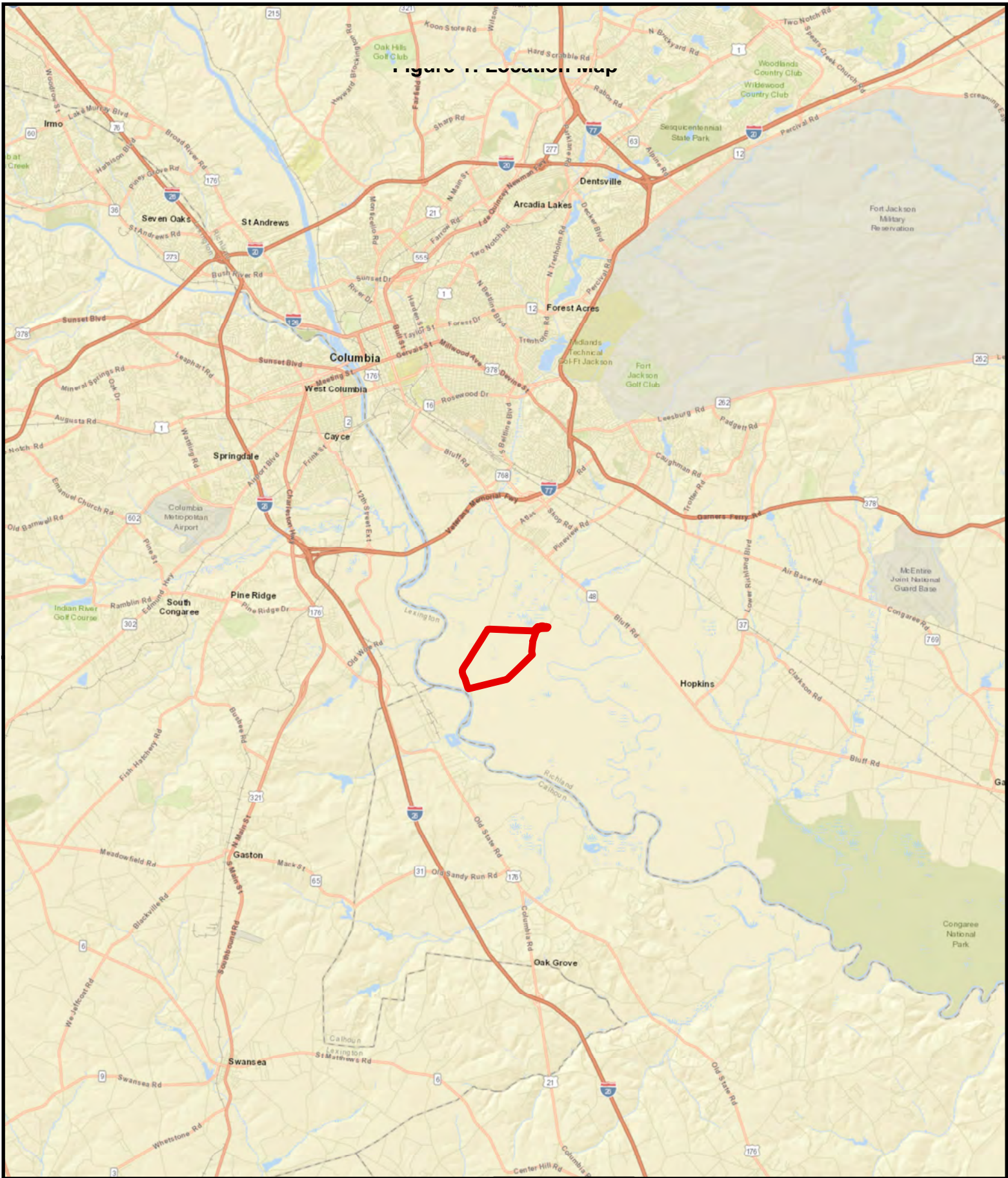


Figure 1. Location map

Goose Pond Mitigation Bank
 Richland County, South Carolina

 Goose Pond Mitigation Site



Notes:


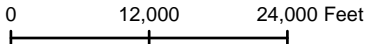
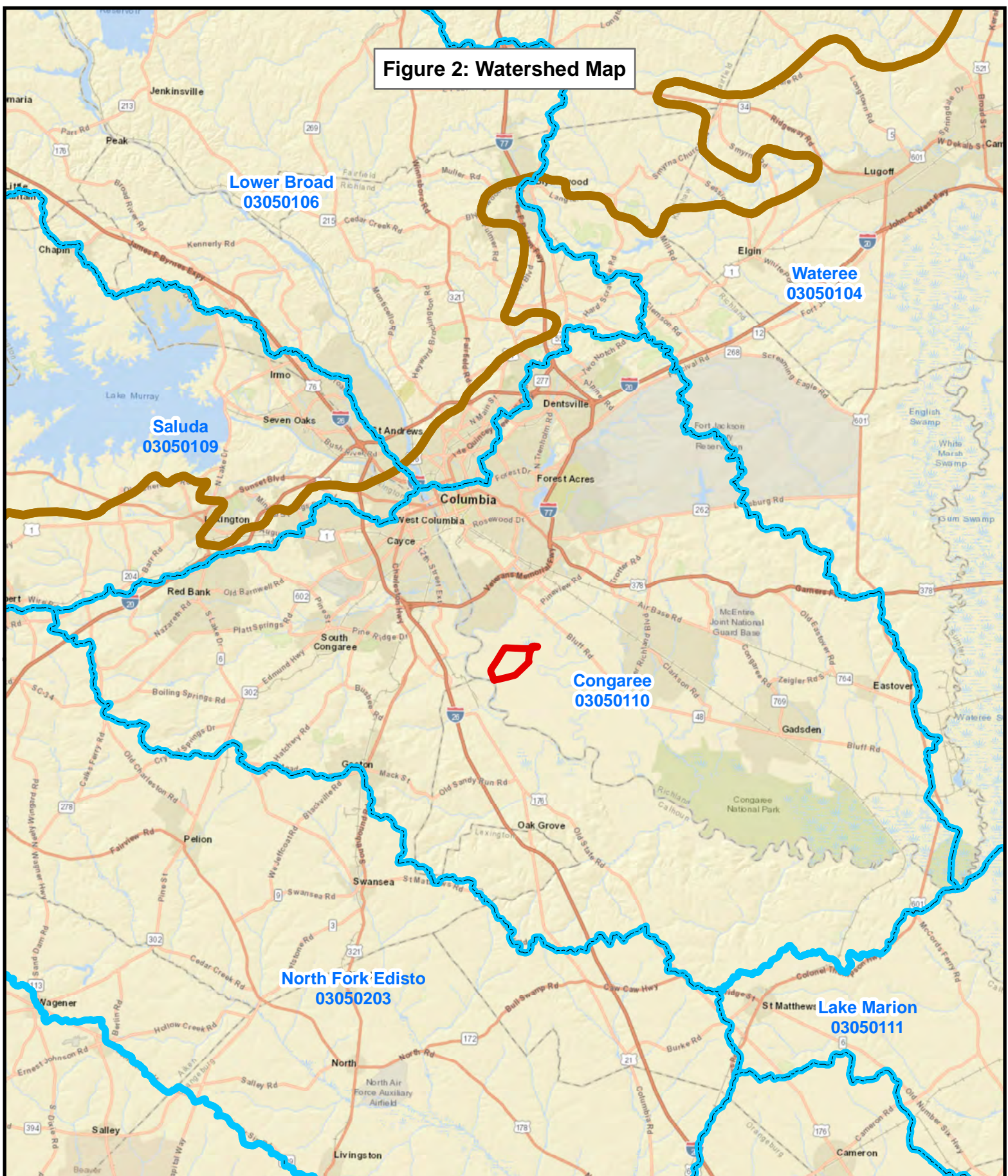



 

Figure 2: Watershed Map


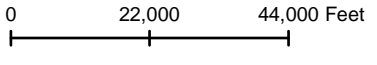


**South Fork Edisto
Goose Pond
Mitigation Bank**
Richland County, South Carolina

-  Goose Pond Mitigation Site
-  USGS 8-Digit HUC Boundaries
-  Level III Ecoregion Line



Notes: **Four Hole
03050205**

Conservation Success in the COWASEE Basin

Figure 3: COWASEE Basin Map

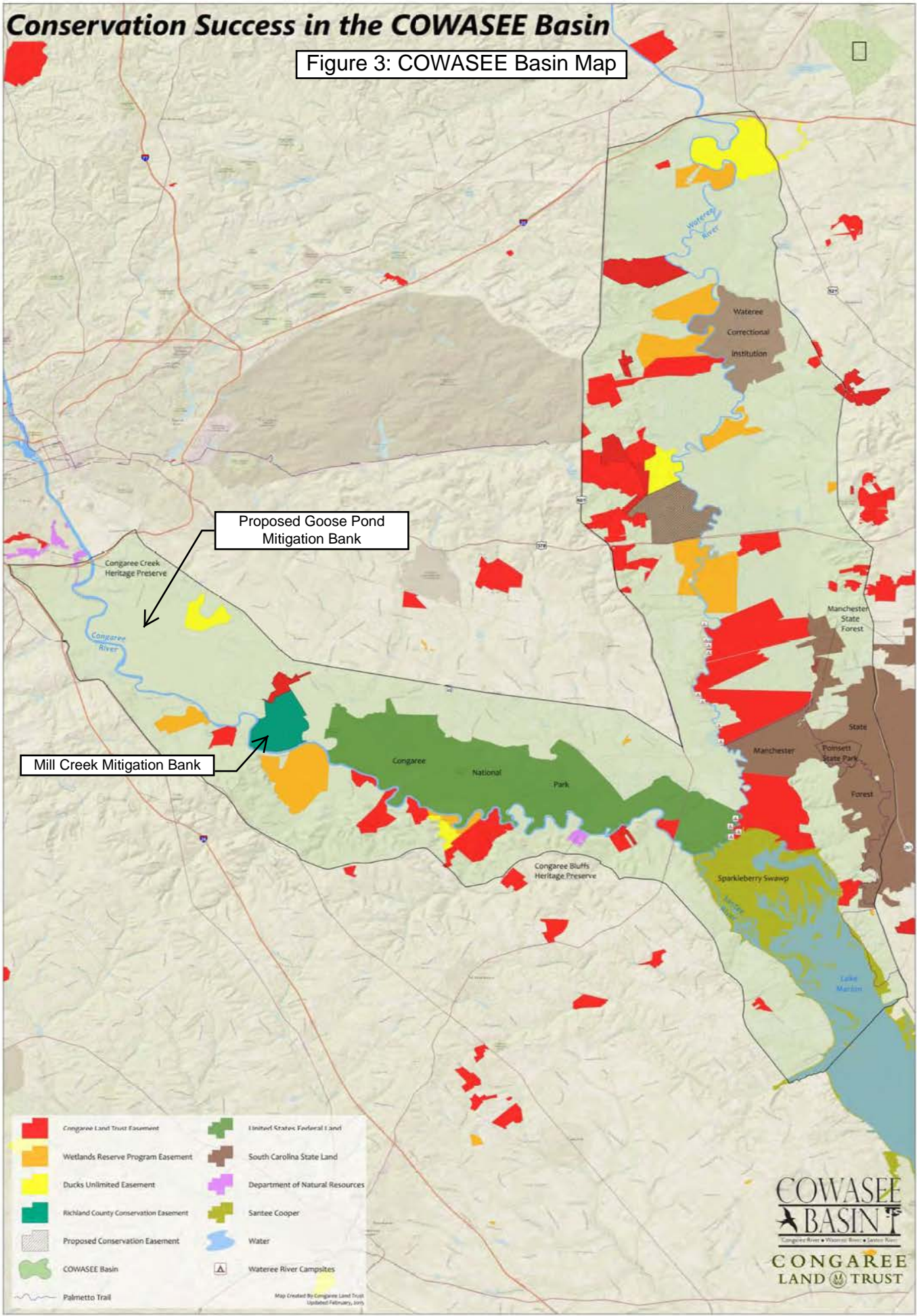
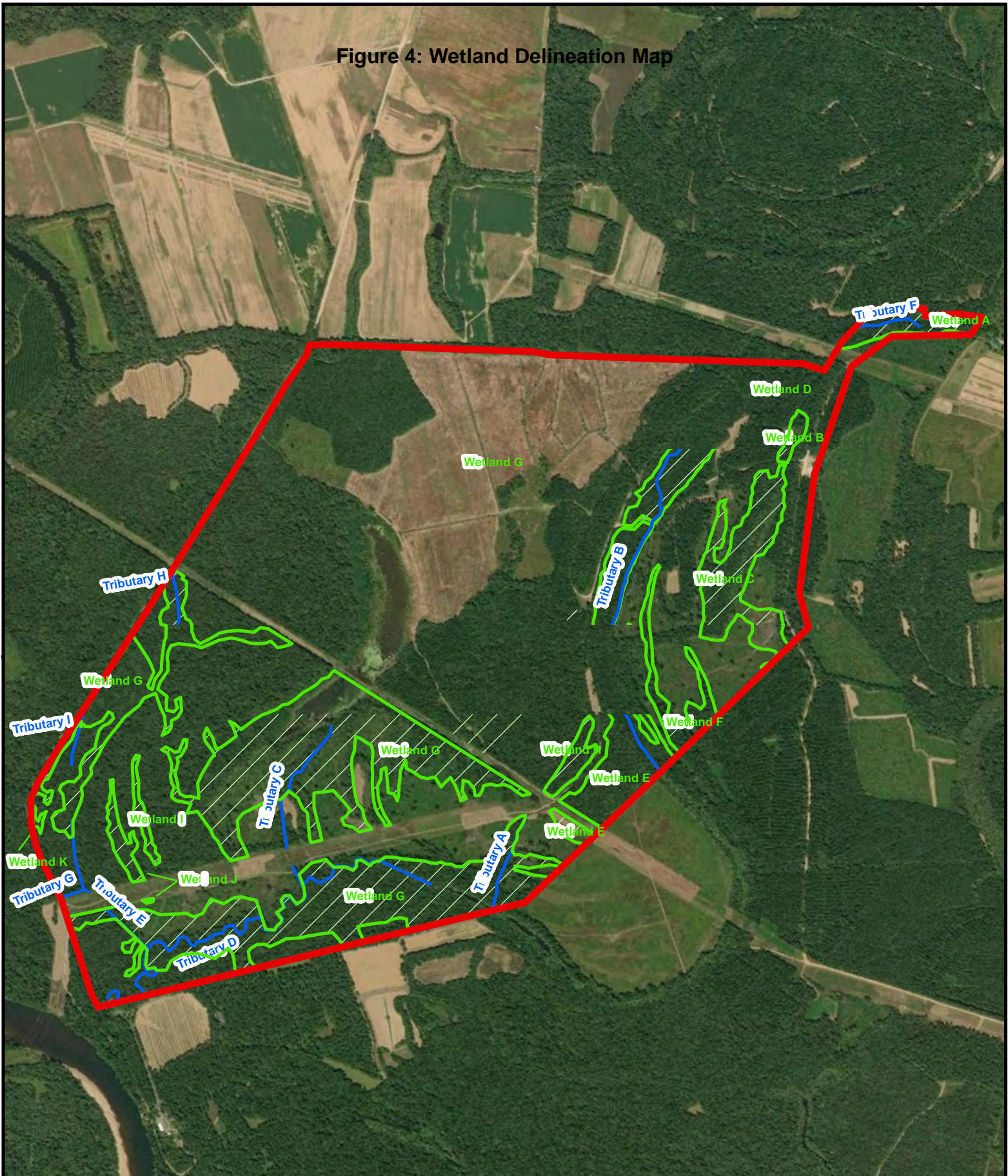





Figure 4: Wetland Delineation Map



Goose Pond Mitigation Bank

Richland County, South Carolina

-  Goose Pond Mitigation Site
-  Wetlands - 676 Acres
-  Existing Streams - 20,076 Feet



Notes: Aquatic resources within utility right-of-way are not included in total acreage or linear feet



0 1,100 2,200 Feet

Figure 5: USGS Topographical Quad Map
Fort Jackson South



**Goose Pond
Mitigation Bank**

Richland County, South Carolina

 Goose Pond Mitigation Site



Palustrine Group

Notes:



0 1,100 2,200 Feet

Figure 6: Elevation Map



**Goose Pond
Mitigation Bank**

Richland County, South Carolina

 Goose Pond Mitigation Site



Notes:



0 1,100 2,200 Feet

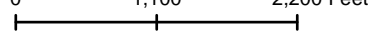
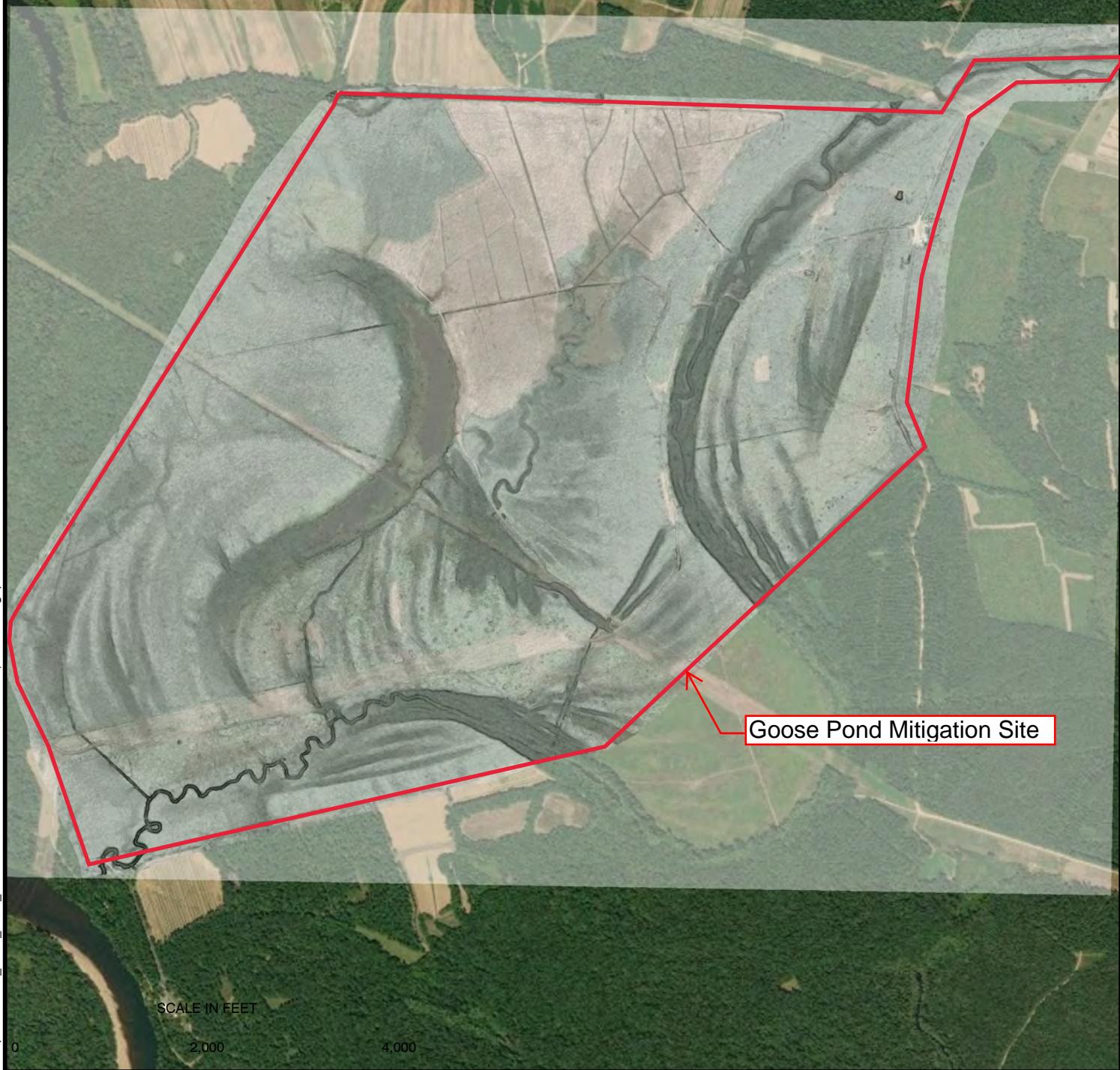
A horizontal scale bar with three segments, marked with the numbers 0, 1,100, and 2,200. The unit 'Feet' is written at the end of the bar.



Figure 7: LIDAR Map

LEGEND
 183021-SV-EXISTING-LiDAR.tif
Value
 High : 121.955
 Low : 115.598



Goose Pond Mitigation Site

SCALE IN FEET
0 2,000 4,000



Civil & Environmental Consultants, Inc.
 600 Marketplace Avenue, Suite 200 - Bridgeport, WV 26330-9121
 Ph: 304-933-3119 · Toll: 855-488-9539 · Fax: 304-933-3327
 www.cecinc.com

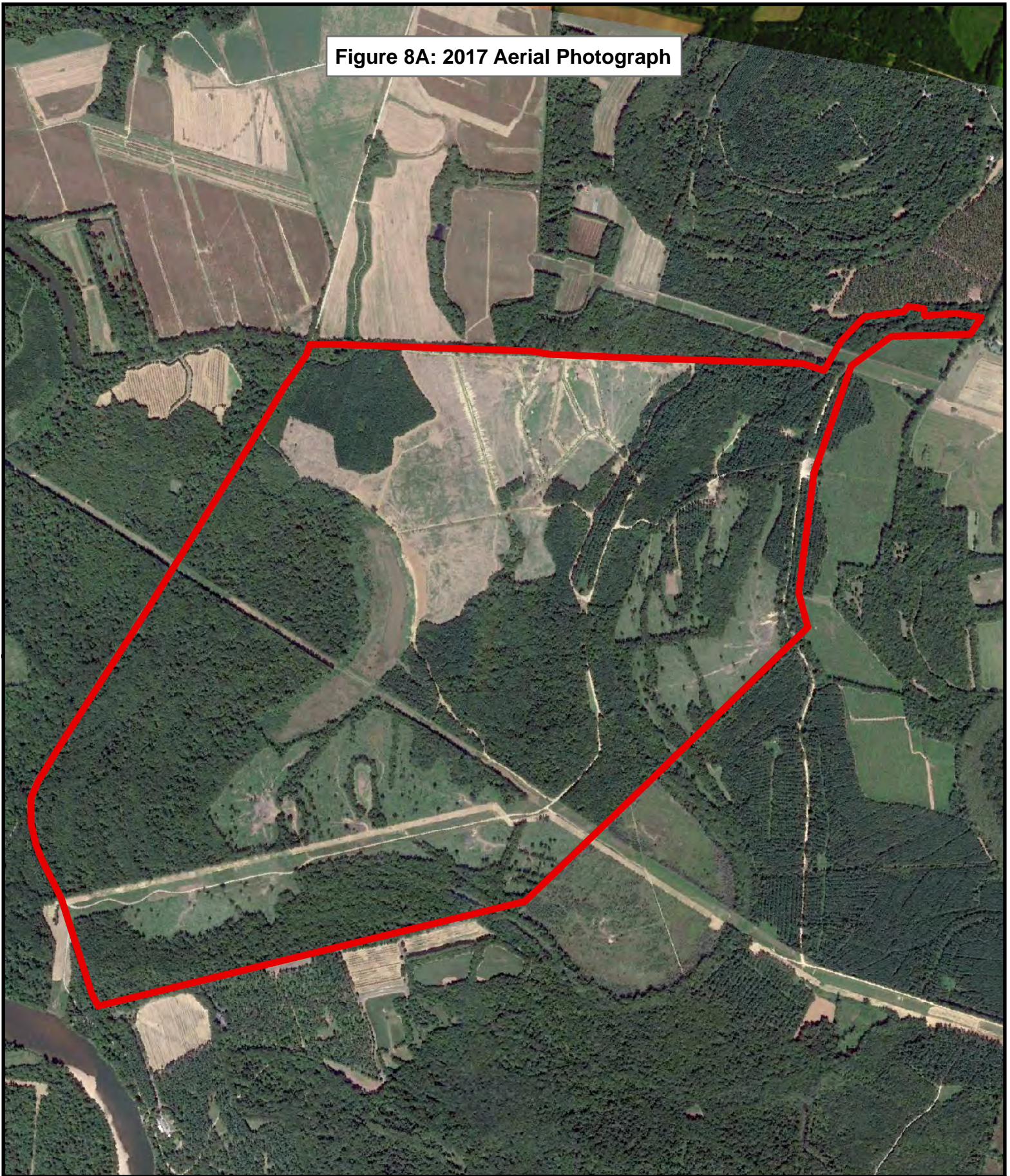
PALUSTRINE GROUP
 GOOSE POND MITIGATION BANK
 RICHLAND COUNTY, SOUTH CAROLINA

ELEVATION / LIDAR MAP (DEM)

DRAWN BY:	WOP	CHECKED BY:	DRAFT	APPROVED BY:	DRAFT	FIGURE NO:	7
DATE:	07/09/18	SCALE:	1" = 1,500'	PROJECT NO:	183-021		


\\svr-bridgeport\p\2018\183-021-GIS\Maps\183021_Lidar_DEM_8.5x11.mxd - 7/9/2018 - 3:36:12 PM (mbainbridge)

Figure 8A: 2017 Aerial Photograph



**Goose Pond
Mitigation Bank**

Richland County, South Carolina

 Goose Pond Mitigation Site

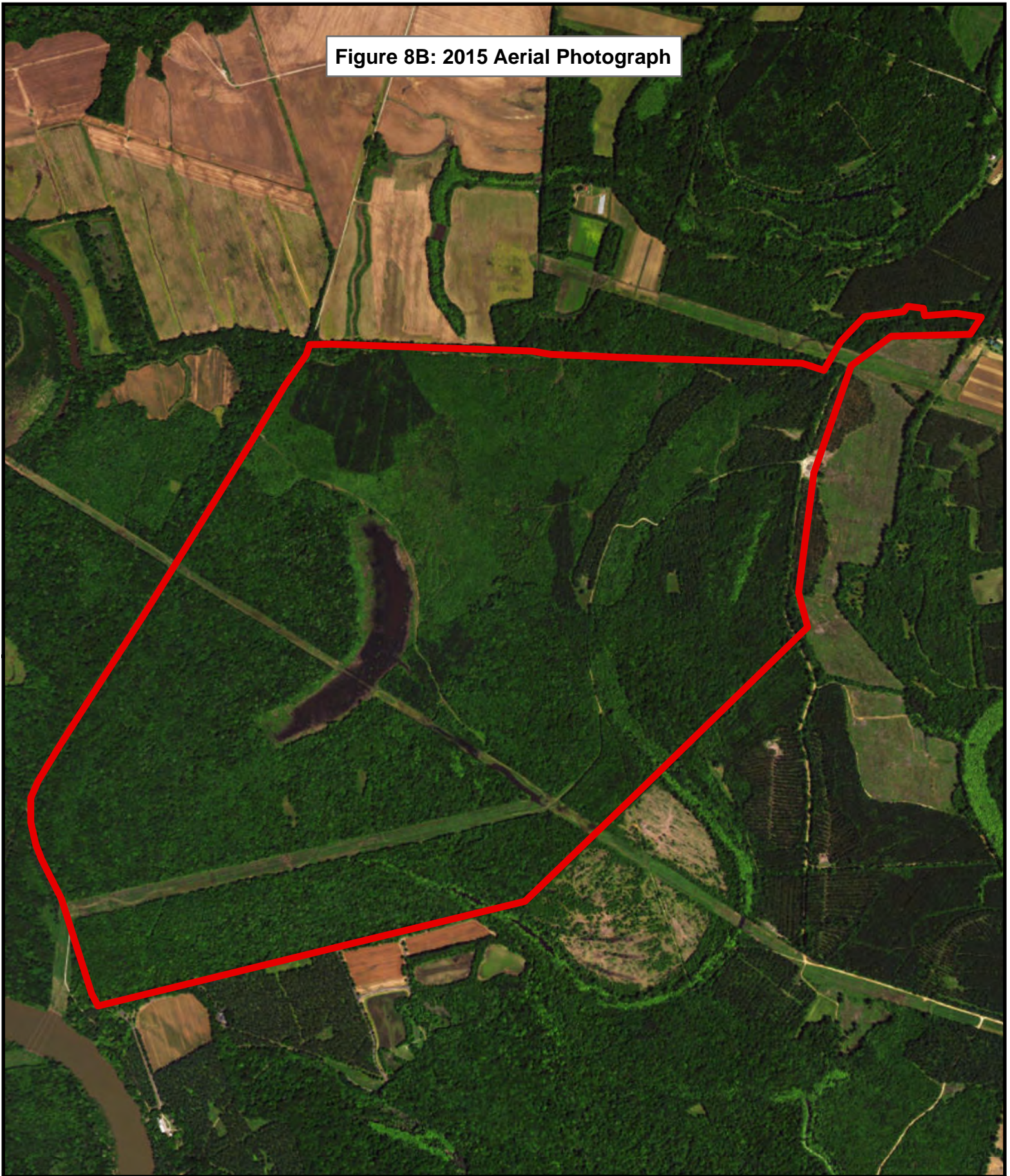


Notes:




0 1,100 2,200 Feet

Figure 8B: 2015 Aerial Photograph



**Goose Pond
Mitigation Bank**

Richland County, South Carolina

 Goose Pond Mitigation Site

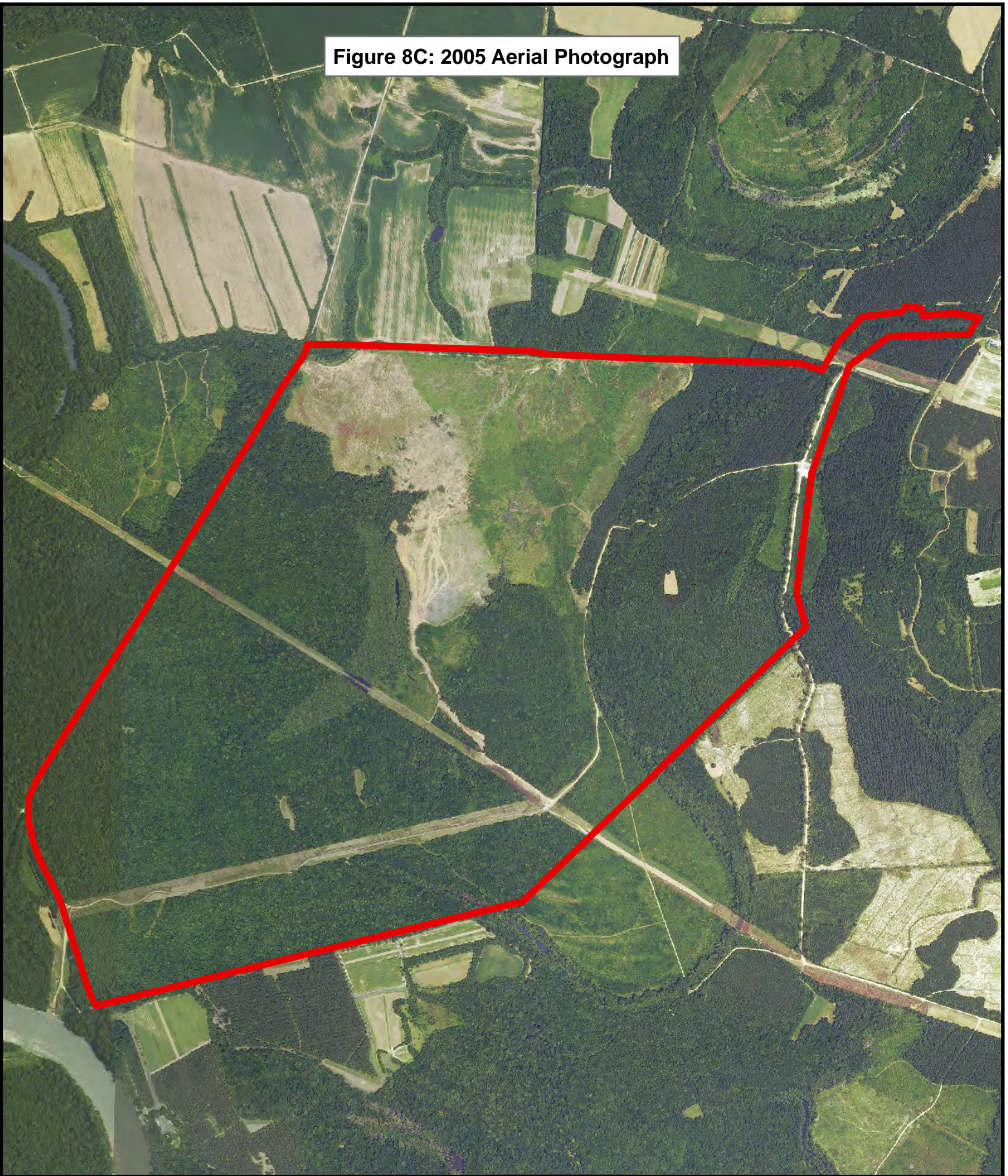


Notes:



0 1,100 2,200 Feet

Figure 8C: 2005 Aerial Photograph



**Goose Pond
Mitigation Bank**

Richland County, South Carolina

 Goose Pond Mitigation Site

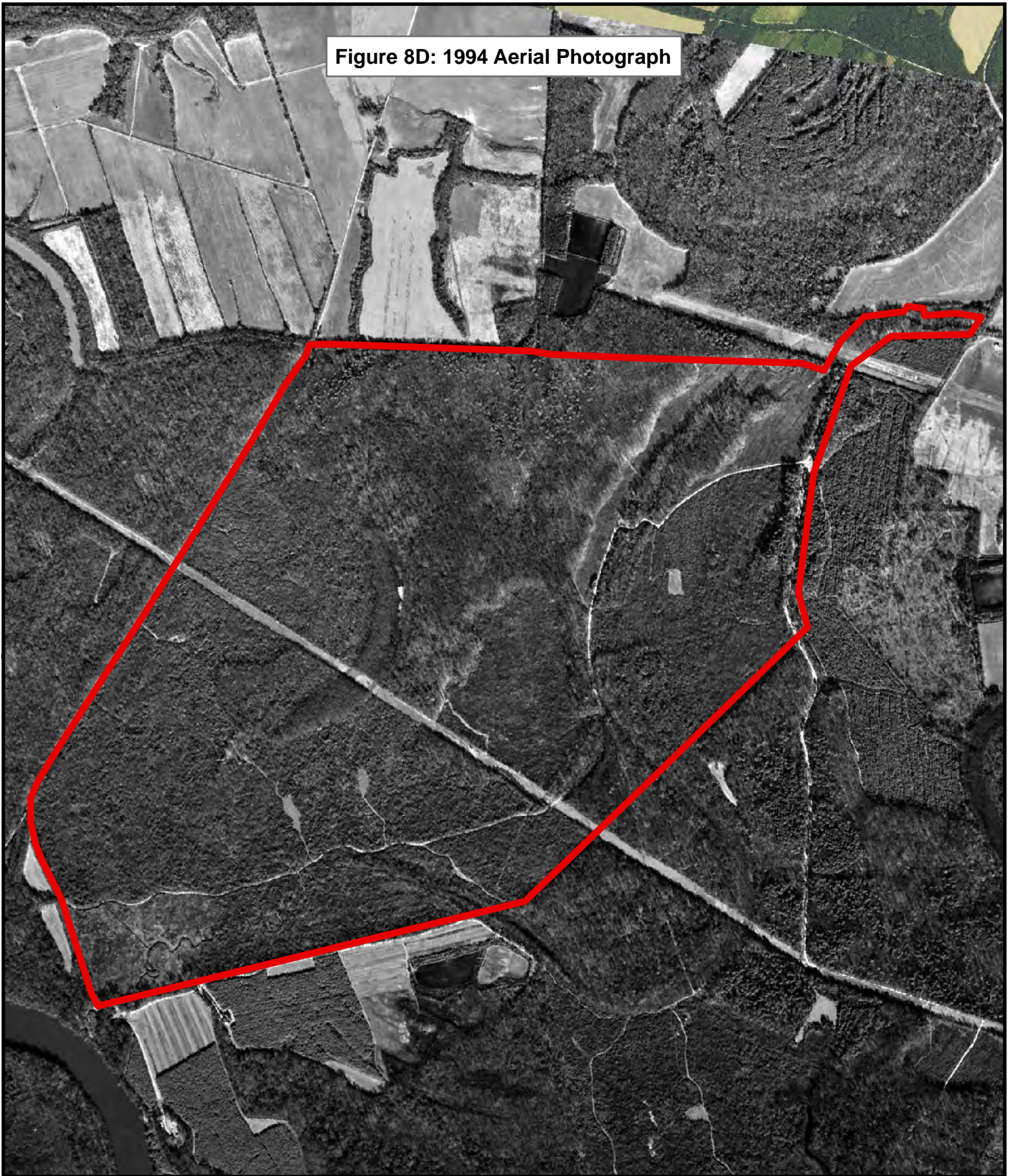


Notes:



0 1,100 2,200 Feet

Figure 8D: 1994 Aerial Photograph



**Goose Pond
Mitigation Bank**

Richland County, South Carolina

 Goose Pond Mitigation Site

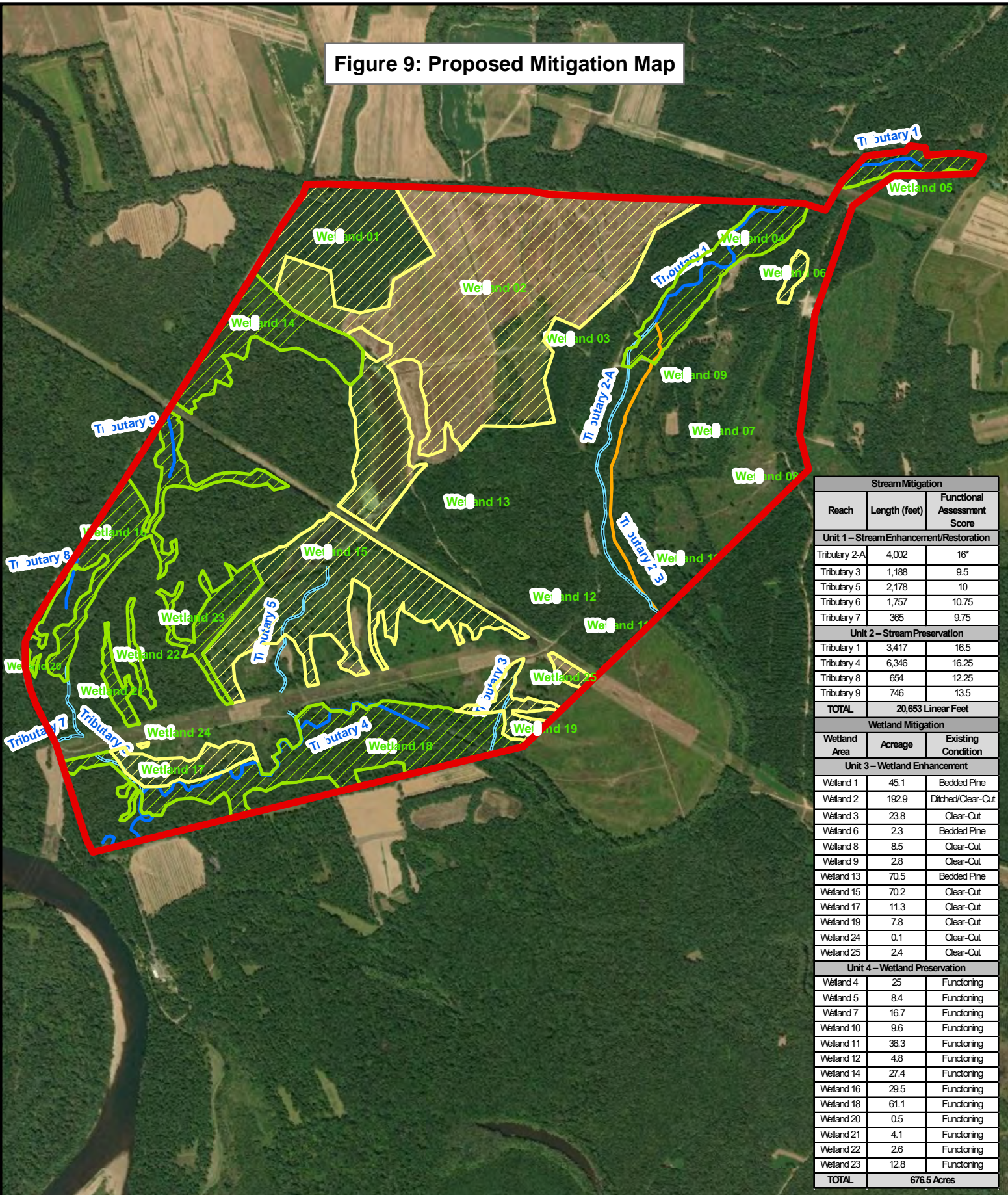


Notes:



0 1,100 2,200 Feet

Figure 9: Proposed Mitigation Map



Stream Mitigation		
Reach	Length (feet)	Functional Assessment Score
Unit 1 – Stream Enhancement/Restoration		
Tributary 2-A	4,002	16*
Tributary 3	1,188	9.5
Tributary 5	2,178	10
Tributary 6	1,757	10.75
Tributary 7	365	9.75
Unit 2 – Stream Preservation		
Tributary 1	3,417	16.5
Tributary 4	6,346	16.25
Tributary 8	654	12.25
Tributary 9	746	13.5
TOTAL	20,653 Linear Feet	
Wetland Mitigation		
Wetland Area	Acreage	Existing Condition
Unit 3 – Wetland Enhancement		
Wetland 1	45.1	Bedded Pine
Wetland 2	192.9	Ditched/Clear-Cut
Wetland 3	23.8	Clear-Cut
Wetland 6	2.3	Bedded Pine
Wetland 8	8.5	Clear-Cut
Wetland 9	2.8	Clear-Cut
Wetland 13	70.5	Bedded Pine
Wetland 15	70.2	Clear-Cut
Wetland 17	11.3	Clear-Cut
Wetland 19	7.8	Clear-Cut
Wetland 24	0.1	Clear-Cut
Wetland 25	2.4	Clear-Cut
Unit 4 – Wetland Preservation		
Wetland 4	25	Functioning
Wetland 5	8.4	Functioning
Wetland 7	16.7	Functioning
Wetland 10	9.6	Functioning
Wetland 11	36.3	Functioning
Wetland 12	4.8	Functioning
Wetland 14	27.4	Functioning
Wetland 16	29.5	Functioning
Wetland 18	61.1	Functioning
Wetland 20	0.5	Functioning
Wetland 21	4.1	Functioning
Wetland 22	2.6	Functioning
Wetland 23	12.8	Functioning
TOTAL	676.5 Acres	

Goose Pond Mitigation Bank
Richland County, South Carolina

- Goose Pond Mitigation Site
- Ditched Channel
- Stream Preservation
- Stream Restoration
- Wetland Enhancement
- Wetland Preservation



Notes: *Tributary 2-A is a relic channel. Flow has been diverted into Tributary 2-B.

Upland and riparian buffers are not depicted.

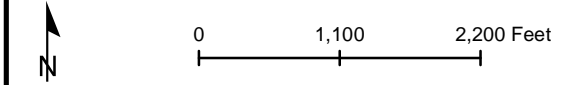
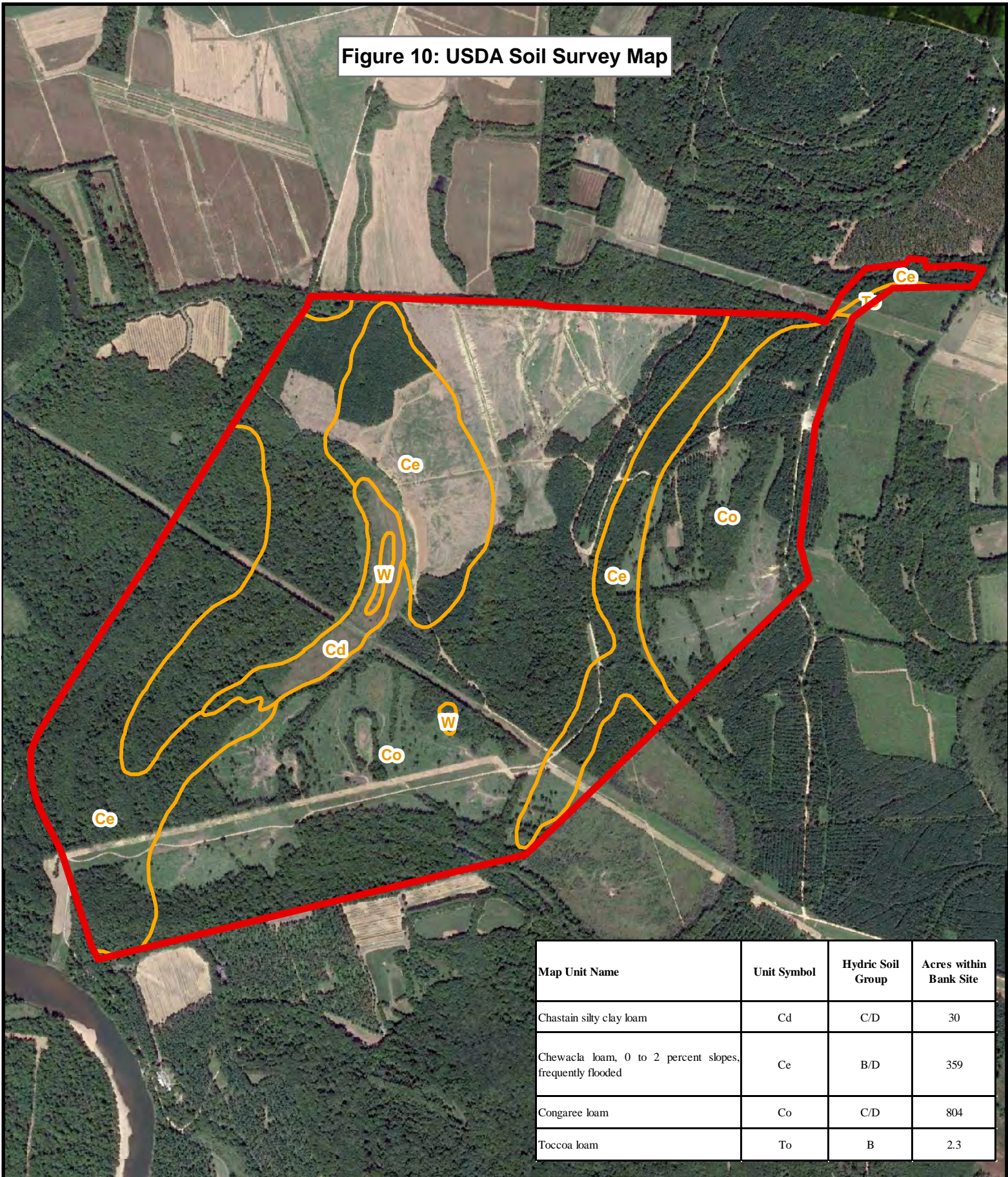




Figure 10: USDA Soil Survey Map



Map Unit Name	Unit Symbol	Hydric Soil Group	Acres within Bank Site
Chastain silty clay loam	Cd	C/D	30
Chewacla loam, 0 to 2 percent slopes, frequently flooded	Ce	B/D	359
Congaree loam	Co	C/D	804
Toccoa loam	To	B	2.3

Goose Pond Mitigation Bank
Richland County, South Carolina

 Goose Pond Mitigation Site
 Soils



Notes:


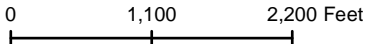
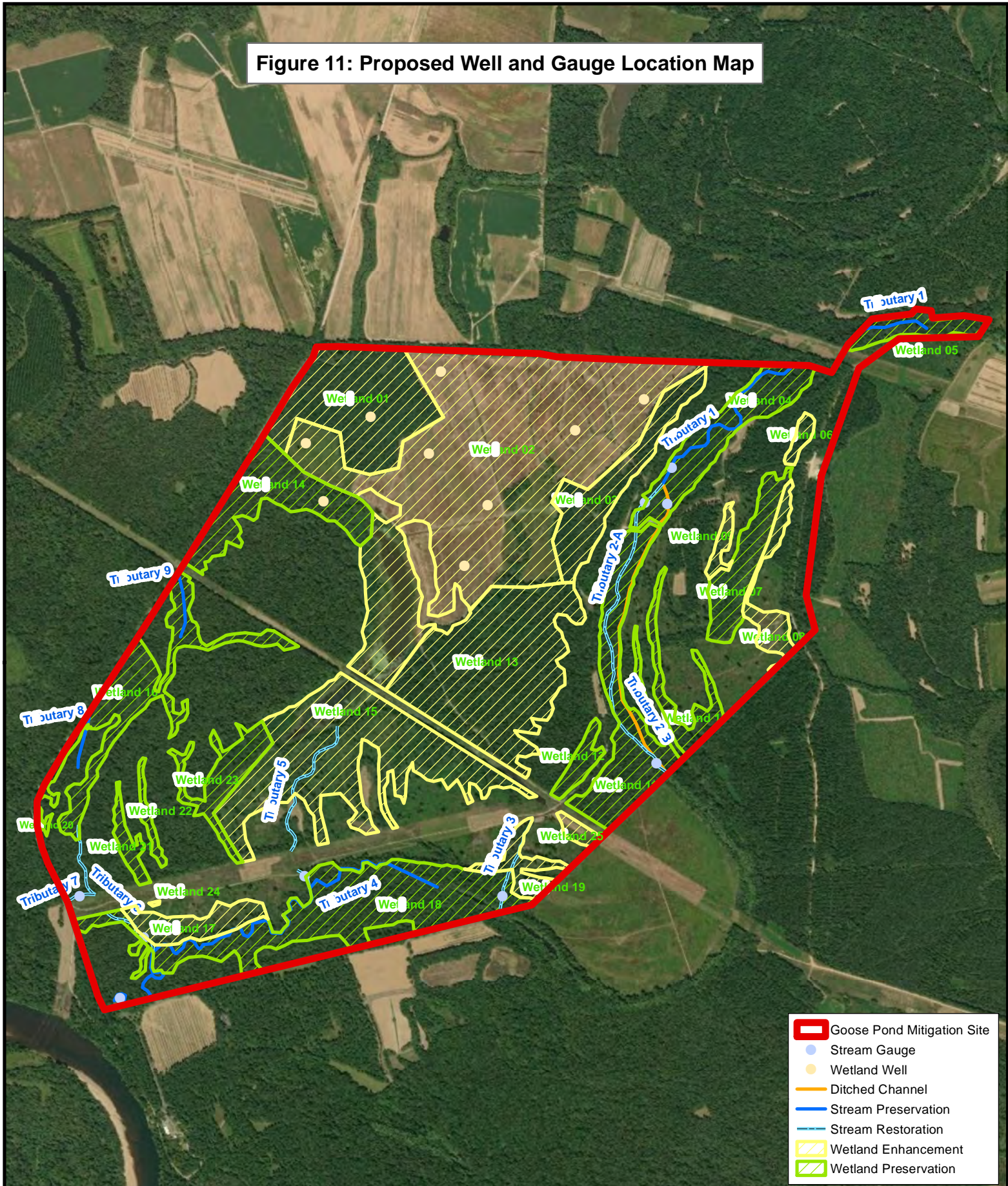



Figure 11: Proposed Well and Gauge Location Map



Goose Pond Mitigation Bank

Richland County, South Carolina

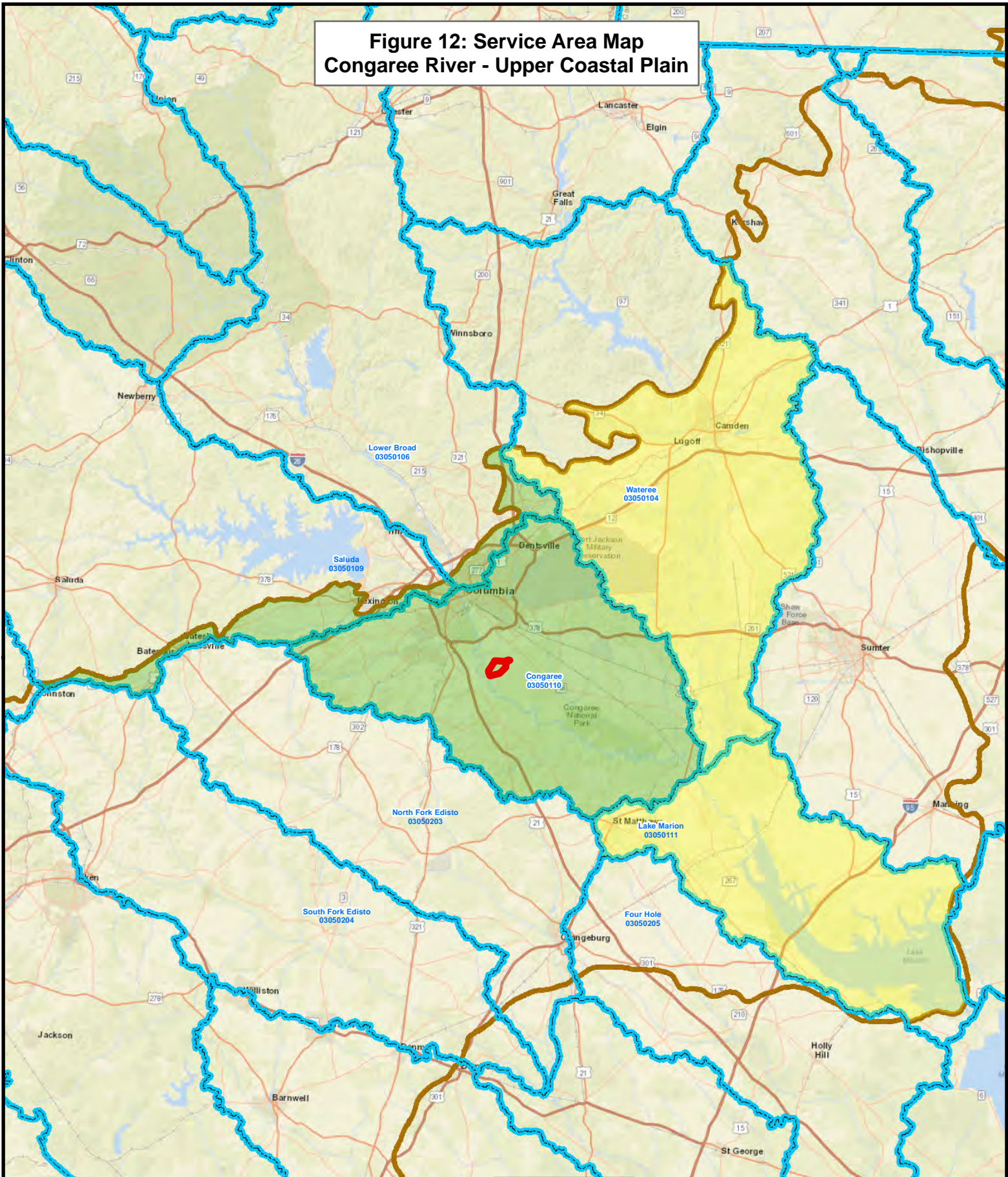


Notes: Upland and riparian buffers are not depicted.






0 1,100 2,200 Feet

**Figure 12: Service Area Map
Congaree River - Upper Coastal Plain**



**Goose Pond
Mitigation Bank**

Richland County, South Carolina

-  Goose Pond Mitigation Site
-  Primary Service Area
-  Secondary Service Area



Notes:



0 48,000 96,000 Feet